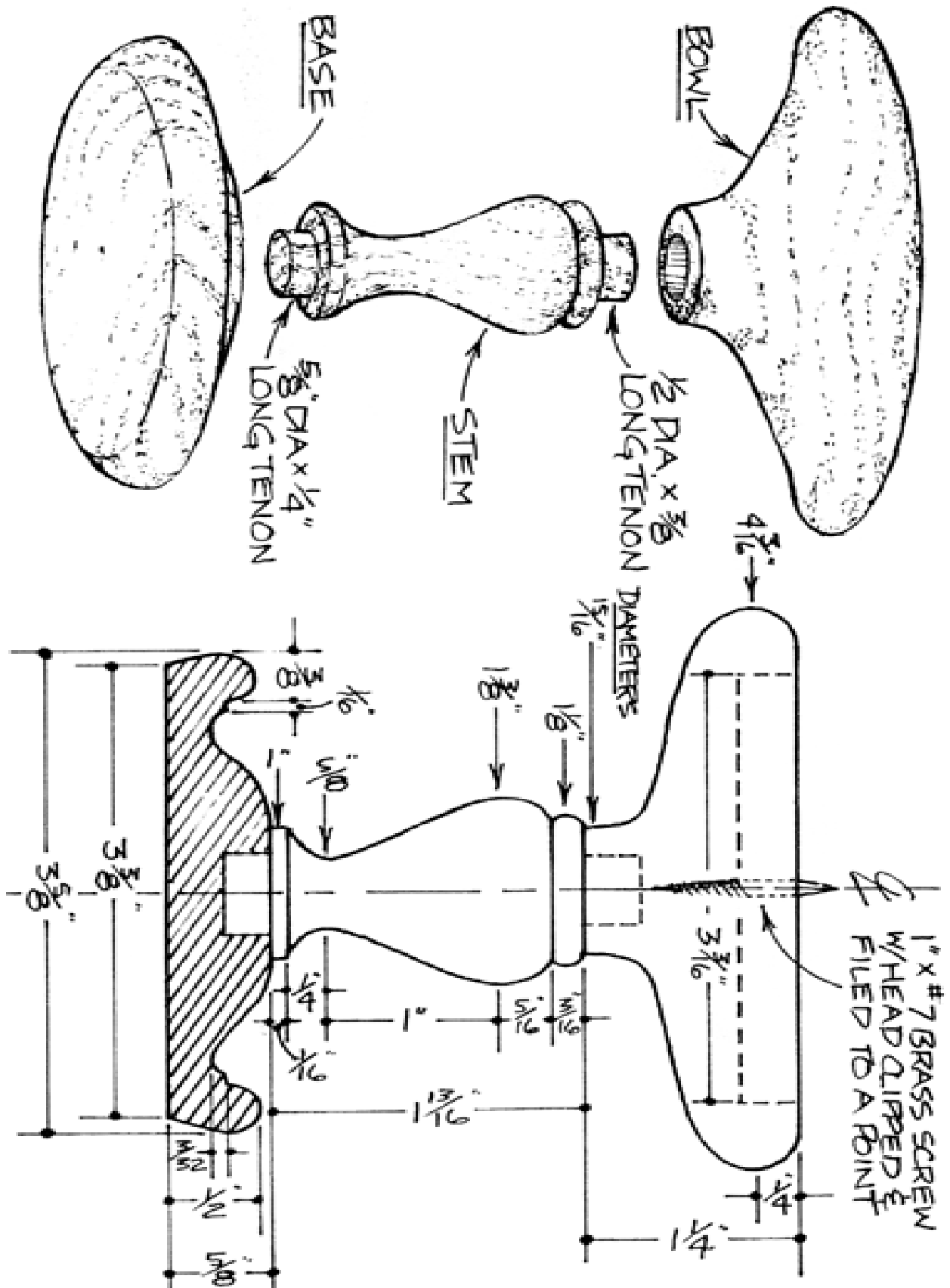




## **Project 12735EZ: Candle Holder**

*Candles will often make lovely additions to a festive occasion, especially if attractive holders are used. The one shown is made from walnut, although any hardwood that's suitable for turning can also be used. With a little practice this becomes a fairly easy turning job, making it a good item to consider for sale at craft fairs and gift shops.*

# Candle Holder Complete Schematic



# Candle Holder Step-by-Step Instructions

1. **NOTE** that the project consists of three separate parts, a base, stem, and bowl. The stem is spindle turned and should present no special problems. The base is faceplate turned, and again no special problems should be encountered. For the bowl though, there are a few suggested procedures.
2. Select a piece of 2" nominal (1-3/4" actual) stock from which to make the bowl.
3. Secure the stock to the faceplate.
4. Turn the top half of the bowl, including the 5/16" deep by 3-3/16" candle well and 1/8" diameter pilot hole for the bottom of the spike.
5. Sand thoroughly.
6. Remove from the faceplate.
7. Center, carefully, a small faceplate in the candle well and fasten with short screws.
8. Turn the bottom half of the bowl.
9. Sand the bottom half.
10. Remove the faceplate.
11. Fill the screw holes in the well with a mixture of sawdust and glue.
12. Obtain a 1" x #7 brass wood screw to make the center spike, which will add stability.
13. Turn the screw into the pilot hole, then remove.
14. Cut off the screw head.
15. File the head end to a point.
16. Use a pair of pliers to hold the pointed end.
17. Turn the screw into the bowl.
18. Apply glue to the spindle tenons.
19. Assemble the three parts.
20. Apply several coats of Watco Danish Oil for an attractive final finish.

---

These plans were originally published in Volume 6, Issue 5 of *The Woodworker's Journal* (Sept./Oct. 1982, page 44).