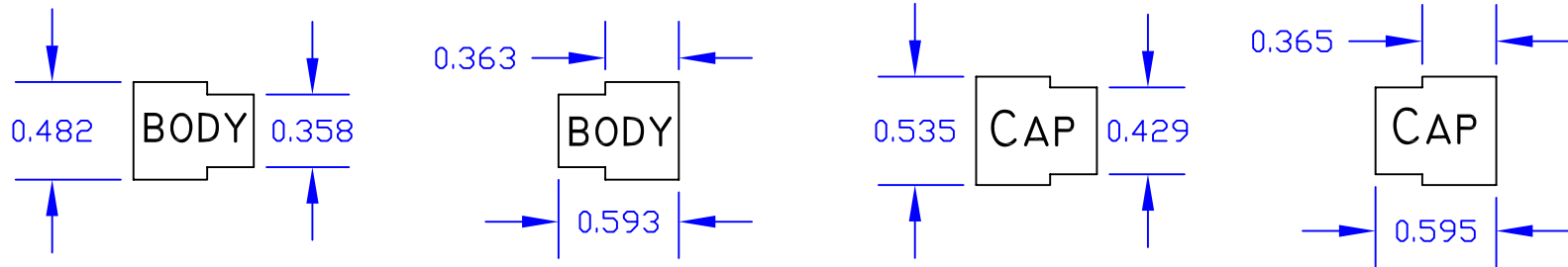


[Click on the kit name to see the bushing specs for that kit](#)

Berea Kits	
Baron	19A
Bracelet Helper/Perfume Pen	8A
Cigar	11A
El Grande	16B
Flat Top American	1B
Perfect Fit	14B
Provincial	9A
Round Top European Twist	3B
Series 2000 Screw Cap	2B
Sierra	20A
Slimline	1A

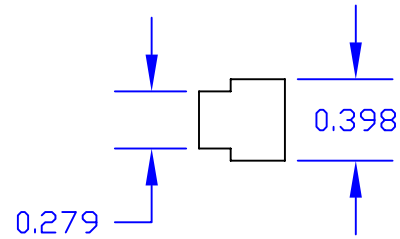
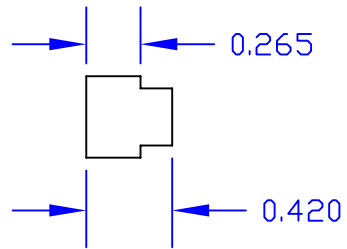
CSUSA Kits	
American Rollerball	050-0502
Broker	050-4446
Deluxe Woodworkers Pencil	050-4498
Panache	050-4011
Patriot	050-4443

- BOTH CAP BUSHINGS ARE THE SAME SIZE
- BOTH BODY BUSHINGS ARE THE SAME SIZE



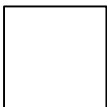
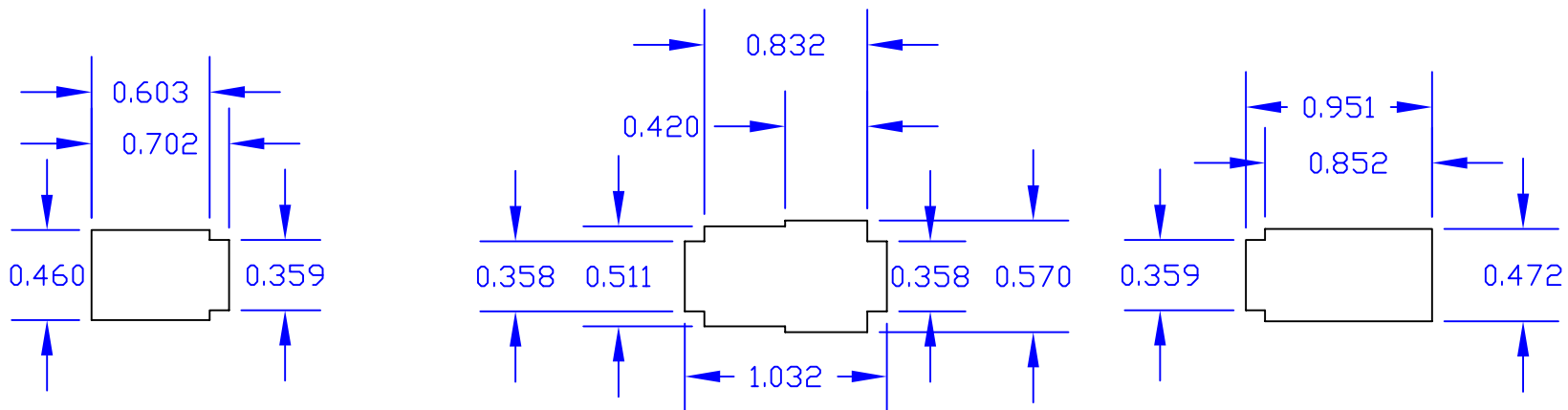
**THIS BOX IS 1/2" X 1/2", USE IT TO DETERMINE HOW CLOSE THIS PRINTS OUT TO SCALE*

<u>KIT NAME:</u>	<u>BUSHING P/N:</u>	<u>MANDREL SIZE:</u>	<u>DRILL SIZES (Ø):</u>	<u>TUBE SIZE(S):</u>	<u>COMMENTS:</u>
BARON	19A	'A'	25/64" 15/32"	CAP: 1.811" x .453" BODY: 2.087" x .3815"	NONE



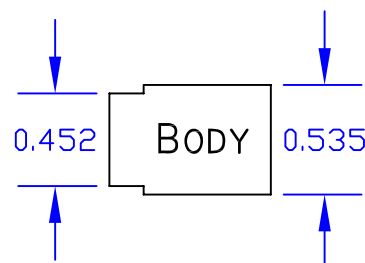
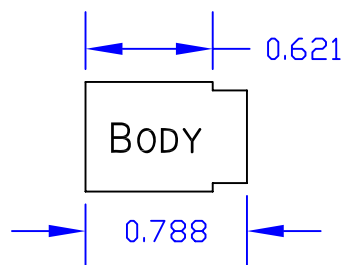
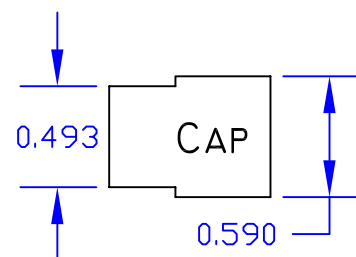
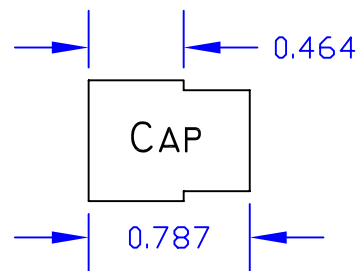
**THIS BOX IS 1/2" X 1/2", USE IT TO DETERMINE HOW CLOSE THIS PRINTS OUT TO SCALE*

<u>KIT NAME:</u>	<u>BUSHING P/N:</u>	<u>MANDREL SIZE:</u>	<u>DRILL SIZES (Ø):</u>	<u>TUBE SIZE(S):</u>	<u>COMMENTS:</u>
BRACELET HELPER/PERFUME PEN	8A	'A'	5/16"	UNKNOWN	BOTH BUSHINGS ARE IDENTICAL



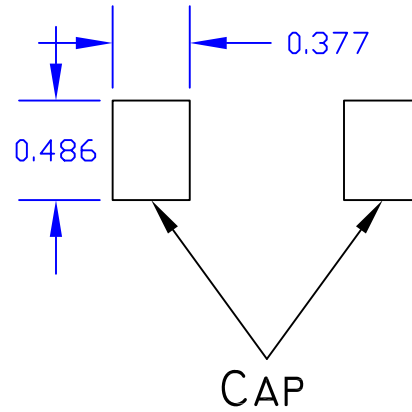
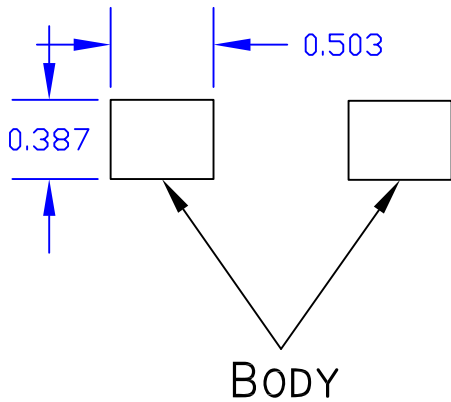
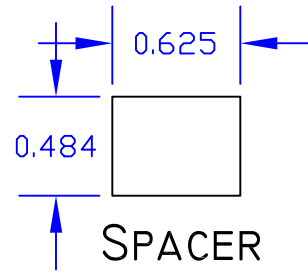
**THIS BOX IS 1/2" X 1/2", USE IT TO DETERMINE HOW CLOSE THIS PRINTS OUT TO SCALE*

<u>KIT NAME:</u>	<u>BUSHING P/N:</u>	<u>MANDREL SIZE:</u>	<u>DRILL SIZES (Ø):</u>	<u>TUBE SIZE(S):</u>	<u>COMMENTS:</u>
CIGAR	IIA	'A'	10MM	CAP: 1.91" x .386" BODY: 2.09" x .386"	NONE

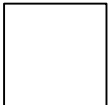


**THIS BOX IS 1/2" X 1/2", USE IT TO DETERMINE HOW CLOSE THIS PRINTS OUT TO SCALE*

<u>KIT NAME:</u>	<u>BUSHING P/N:</u>	<u>MANDREL SIZE:</u>	<u>DRILL SIZES (Ø):</u>	<u>TUBE SIZE(S):</u>	<u>COMMENTS:</u>
EL GRANDE	16B	'B'	31/64" 33/64"	UNKNOWN	NONE

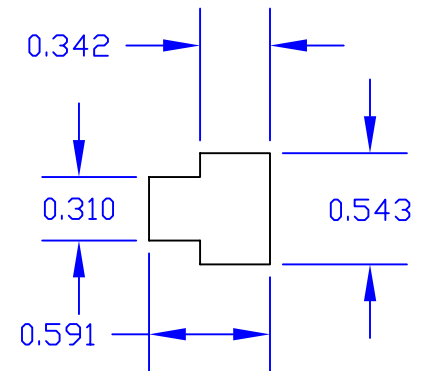
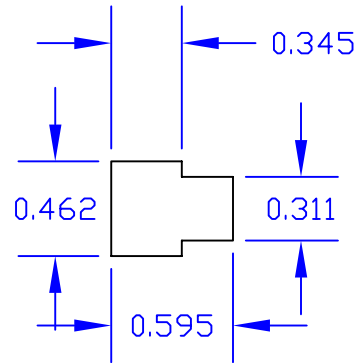
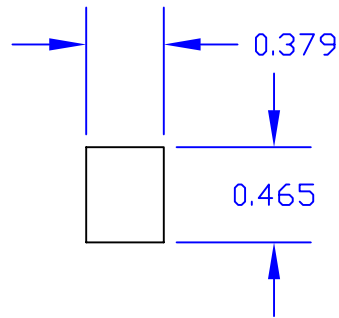
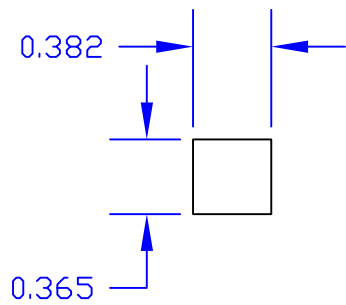
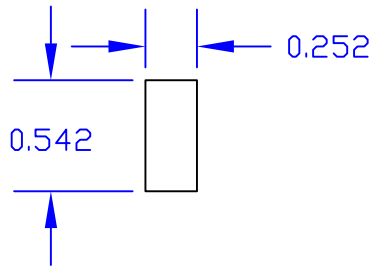


- BOTH CAP BUSHINGS ARE THE SAME SIZE
- BOTH BODY BUSHINGS ARE THE SAME SIZE
- SPACER IS TO COVER BARE TUBING AFTER CUTTING TENON



**THIS BOX IS 1/2" X 1/2", USE IT TO DETERMINE HOW CLOSE THIS PRINTS OUT TO SCALE*

<u>KIT NAME:</u>	<u>BUSHING P/N:</u>	<u>MANDREL SIZE:</u>	<u>DRILL SIZES (Ø):</u>	<u>TUBE SIZE(S):</u>	<u>COMMENTS:</u>
FLAT TOP AMERICAN	IB	'B'	'O'	UNKNOWN	NONE



**THIS BOX IS 1/2" X 1/2", USE IT TO DETERMINE HOW CLOSE THIS PRINTS OUT TO SCALE*

KIT NAME:
PERFECT
FIT

BUSHING P/N:
14B

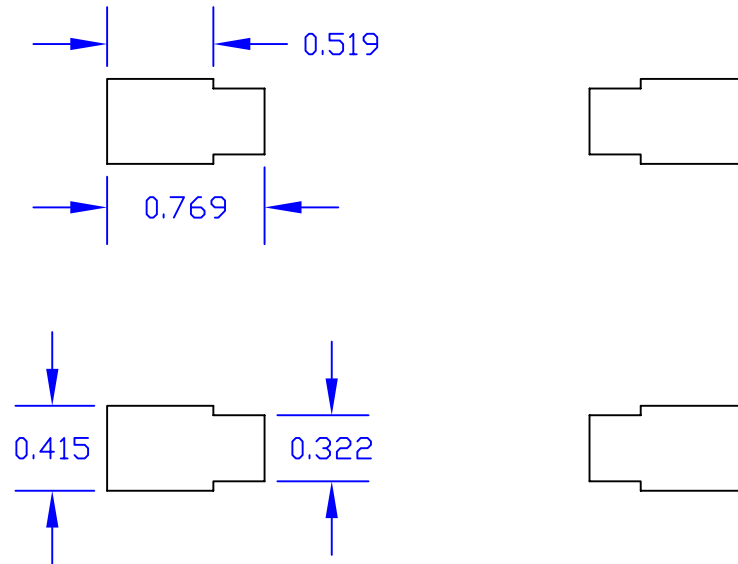
MANDREL SIZE:
'B'

DRILL SIZES (Ø):
1/32"
'O'

TUBE SIZE(S):
CAP:
2.126" x .339"
BODY:
2.362" x .3105"

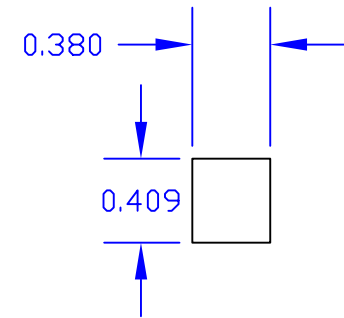
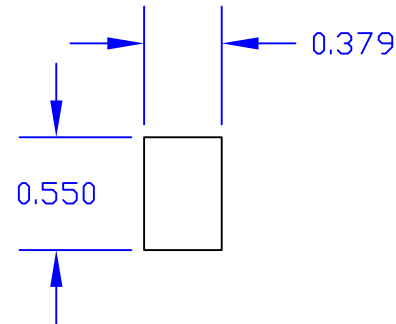
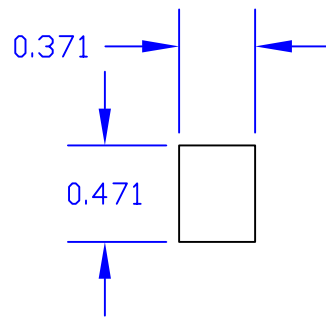
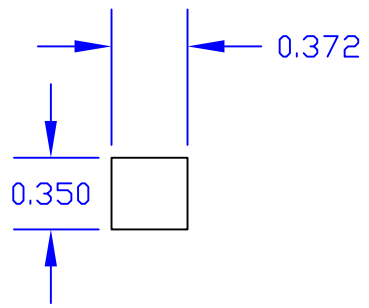
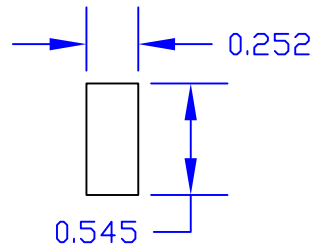
COMMENTS:
NONE

- ALL 4 BUSHINGS ARE THE SAME SIZE



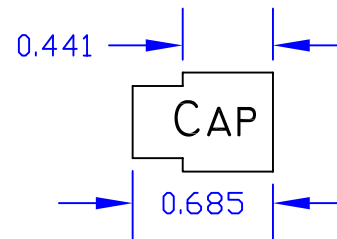
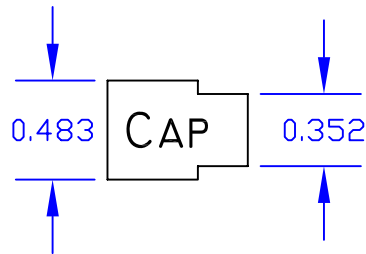
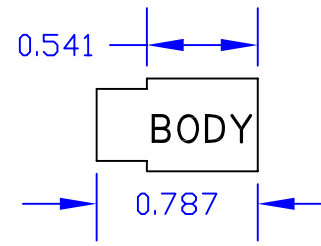
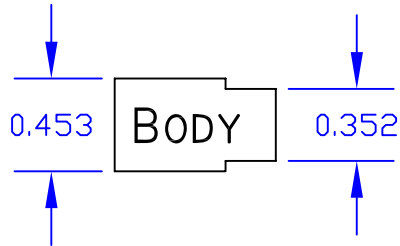
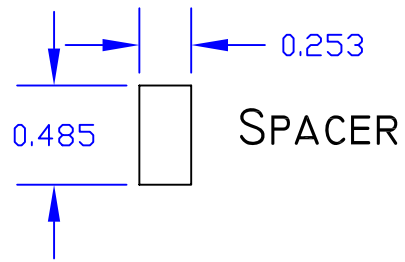
**THIS BOX IS 1/2" X 1/2", USE IT TO DETERMINE HOW CLOSE THIS PRINTS OUT TO SCALE*

<u>KIT NAME:</u>	<u>BUSHING P/N:</u>	<u>MANDREL SIZE:</u>	<u>DRILL SIZES (Ø):</u>	<u>TUBE SIZE(S):</u>	<u>COMMENTS:</u>
PROVINCIAL	9A	'A'	'T'	UNKNOWN	NONE



**THIS BOX IS 1/2" X 1/2", USE IT TO DETERMINE HOW CLOSE THIS PRINTS OUT TO SCALE*

<u>KIT NAME:</u>	<u>BUSHING P/N:</u>	<u>MANDREL SIZE:</u>	<u>DRILL SIZES (Ø):</u>	<u>TUBE SIZE(S):</u>	<u>COMMENTS:</u>
ROUND TOP EUROPEAN TWIST	3B	'B'	'0'	UNKNOWN	NONE

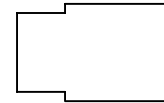
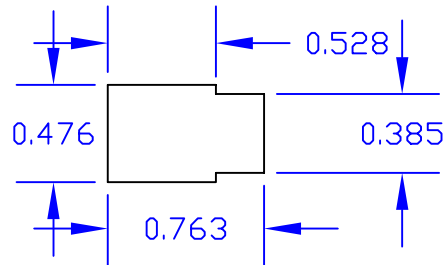


- BOTH CAP BUSHINGS ARE THE SAME SIZE
- BOTH BODY BUSHINGS ARE THE SAME SIZE
- SPACER IS TO COVER BARE TUBING AFTER CUTTING TENON



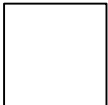
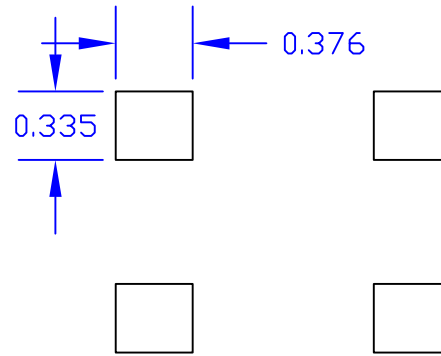
**THIS BOX IS 1/2" X 1/2", USE IT TO DETERMINE HOW CLOSE THIS PRINTS OUT TO SCALE*

<u>KIT NAME:</u>	<u>BUSHING P/N:</u>	<u>MANDREL SIZE:</u>	<u>DRILL SIZES (Ø):</u>	<u>TUBE SIZE(S):</u>	<u>COMMENTS:</u>
SERIES 2K SCREW CAP	2B	'A'	'V'	UNKNOWN	NONE



**THIS BOX IS 1/2" X 1/2", USE IT TO DETERMINE HOW CLOSE THIS PRINTS OUT TO SCALE*

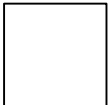
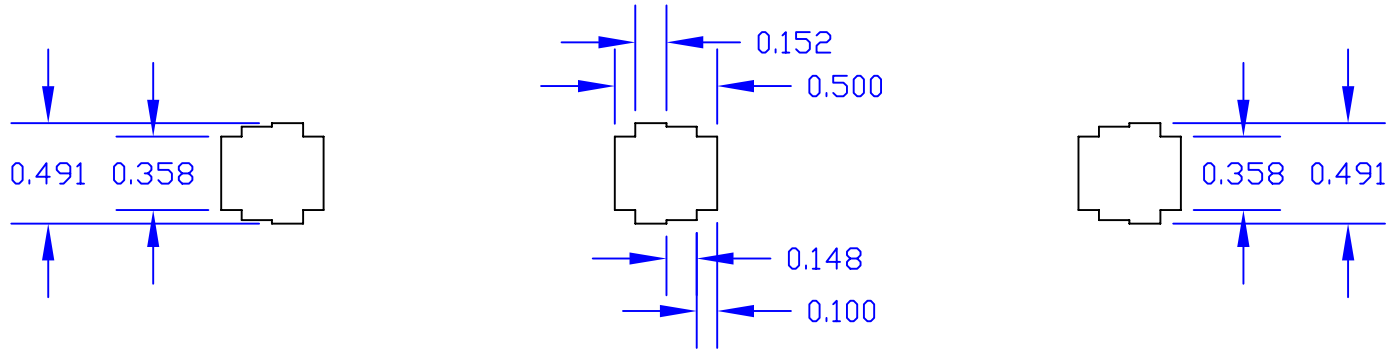
<u>KIT NAME:</u>	<u>BUSHING P/N:</u>	<u>MANDREL SIZE:</u>	<u>DRILL SIZES (Ø):</u>	<u>TUBE SIZE(S):</u>	<u>COMMENTS:</u>
SIERRA	20A	'A'	27/64"	BODY: 2.209" x .41"	BOTH BUSHINGS ARE IDENTICAL



**THIS BOX IS 1/2" X 1/2", USE IT TO DETERMINE HOW CLOSE THIS PRINTS OUT TO SCALE*

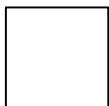
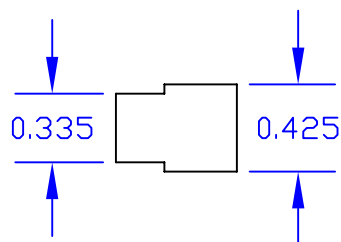
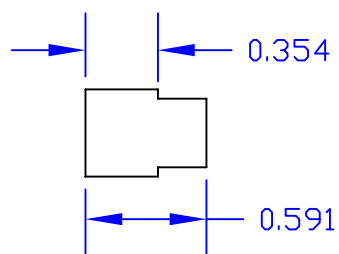
<u>KIT NAME:</u>	<u>BUSHING P/N:</u>	<u>MANDREL SIZE:</u>	<u>DRILL SIZES (Ø):</u>	<u>TUBE SIZE(S):</u>	<u>COMMENTS:</u>
SLIMLINE	IA	'A'	'J' OR 7MM	UNKNOWN	ALL 4 BUSHINGS ARE SAME SIZE

- ALL BUSHINGS ARE THE SAME SIZE



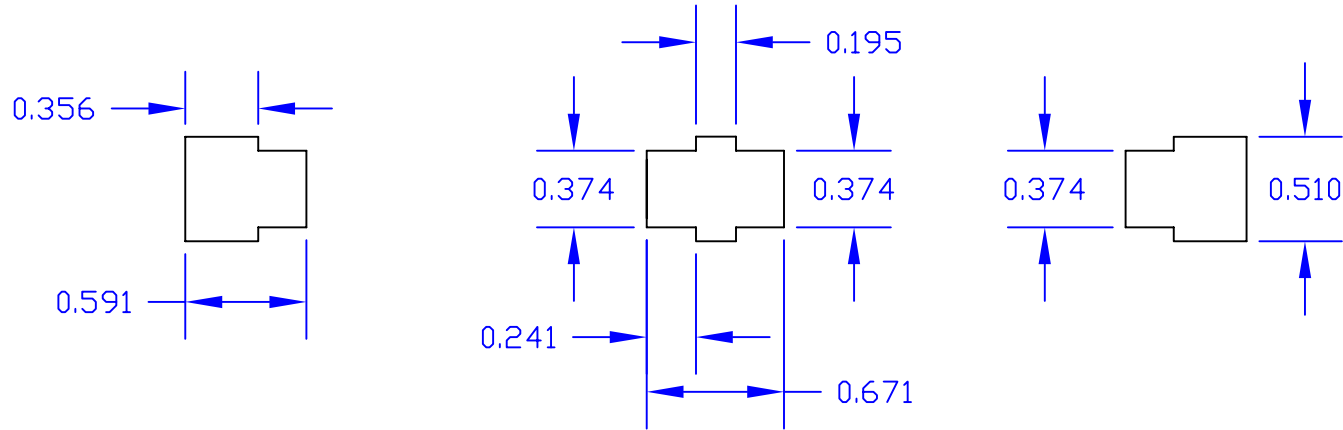
**THIS BOX IS 1/2" X 1/2", USE IT TO DETERMINE HOW CLOSE THIS PRINTS OUT TO SCALE*

<u>KIT NAME:</u>	<u>BUSHING P/N:</u>	<u>MANDREL SIZE:</u>	<u>DRILL SIZES (Ø):</u>	<u>TUBE SIZE(S):</u>	<u>COMMENTS:</u>
AMERICAN ROLLERBALL	050-0502	'A'	10MM	UNKNOWN	NONE



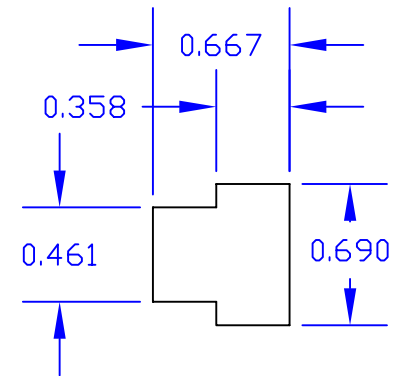
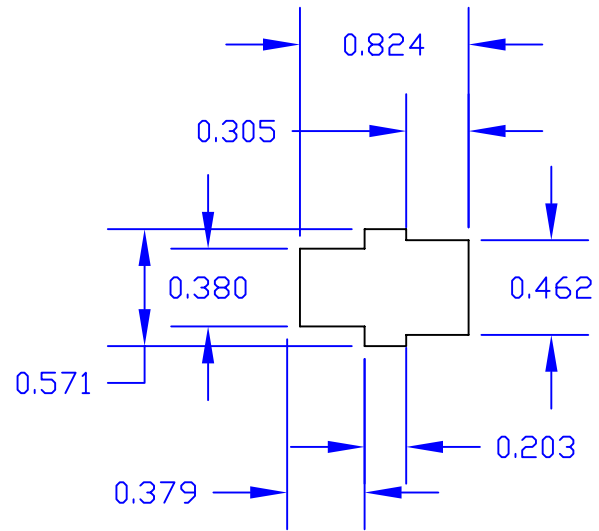
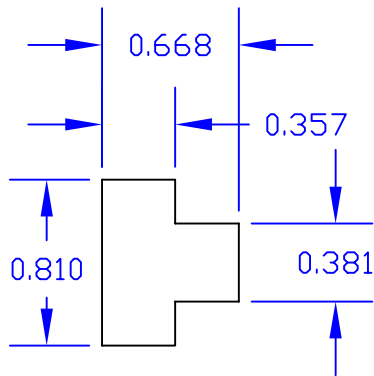
**THIS BOX IS 1/2" X 1/2", USE IT TO DETERMINE HOW CLOSE THIS PRINTS OUT TO SCALE*

<p><u>KIT NAME:</u> BROKER</p>	<p><u>BUSHING P/N:</u> 050-4446</p>	<p><u>MANDREL SIZE:</u> 'A'</p>	<p><u>DRILL SIZES (Ø):</u> 'U'</p>	<p><u>TUBE SIZE(S):</u> UNKNOWN</p>	<p><u>COMMENTS:</u> BOTH BUSHINGS ARE SAME SIZE</p>
------------------------------------	---	-------------------------------------	--	---	---



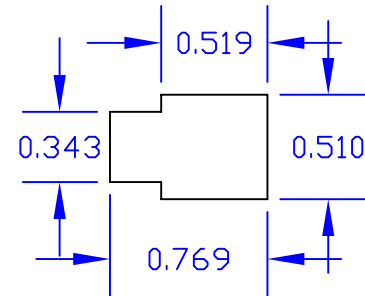
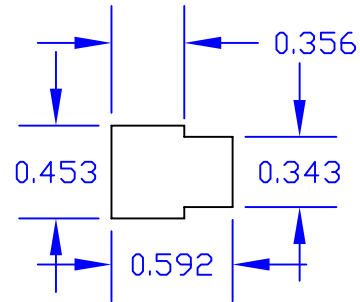
**THIS BOX IS 1/2" X 1/2", USE IT TO DETERMINE HOW CLOSE THIS PRINTS OUT TO SCALE*

<u>KIT NAME:</u>	<u>BUSHING P/N:</u>	<u>MANDREL SIZE:</u>	<u>DRILL SIZES (Ø):</u>	<u>TUBE SIZE(S):</u>	<u>COMMENTS:</u>
DLX WOODWORKERS PENCIL	050-4498	'A'	11MM	UNKNOWN	BOTH END BUSHING ARE SAME SIZE



**THIS BOX IS 1/2" X 1/2", USE IT TO DETERMINE HOW CLOSE THIS PRINTS OUT TO SCALE*

<u>KIT NAME:</u>	<u>BUSHING P/N:</u>	<u>MANDREL SIZE:</u>	<u>DRILL SIZES (Ø):</u>	<u>TUBE SIZE(S):</u>	<u>COMMENTS:</u>
PANACHE	050-4011	'A'	13/32" 12.5MM	UNKNOWN	NONE



**THIS BOX IS 1/2" X 1/2", USE IT TO DETERMINE HOW CLOSE THIS PRINTS OUT TO SCALE*

<u>KIT NAME:</u>	<u>BUSHING P/N:</u>	<u>MANDREL SIZE:</u>	<u>DRILL SIZES (Ø):</u>	<u>TUBE SIZE(S):</u>	<u>COMMENTS:</u>
PATRIOT	050-4443	'A'	3/8"	2.8365" x .3643"	NONE